

# ITS in Krakow









- ▶ City population 750 000
- ▶ Metropolitan area 1,4 mln
- ▶ Second city in Poland
- ▶ UNESCO Heritage
- ▶ Universities
- ▶ Cultural Capital
- ▶ #1 in Europe Outsourcing Destinations
- ▶ PT – tram & bus





# Modal split



**36,3%**



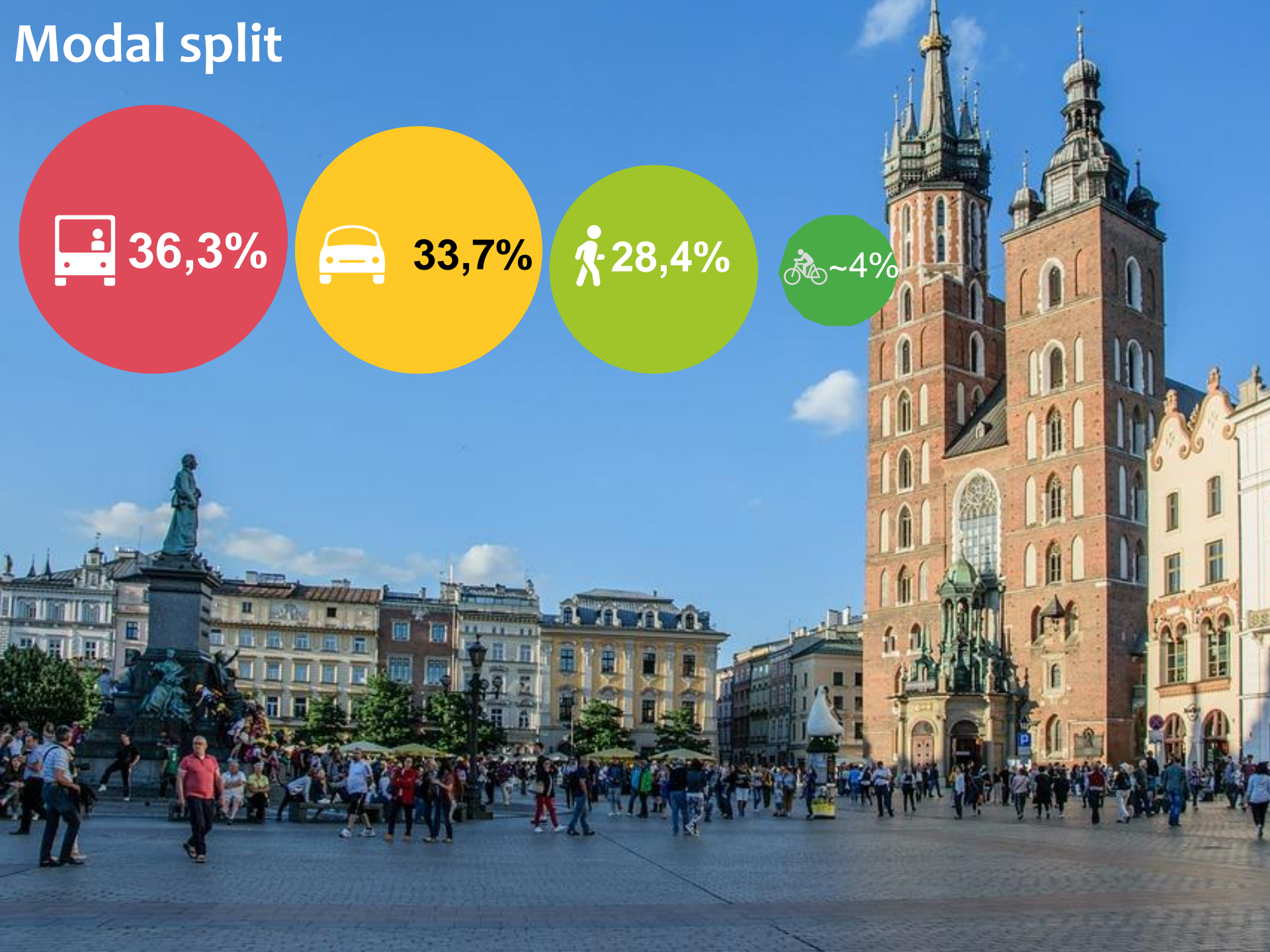
**33,7%**



**28,4%**

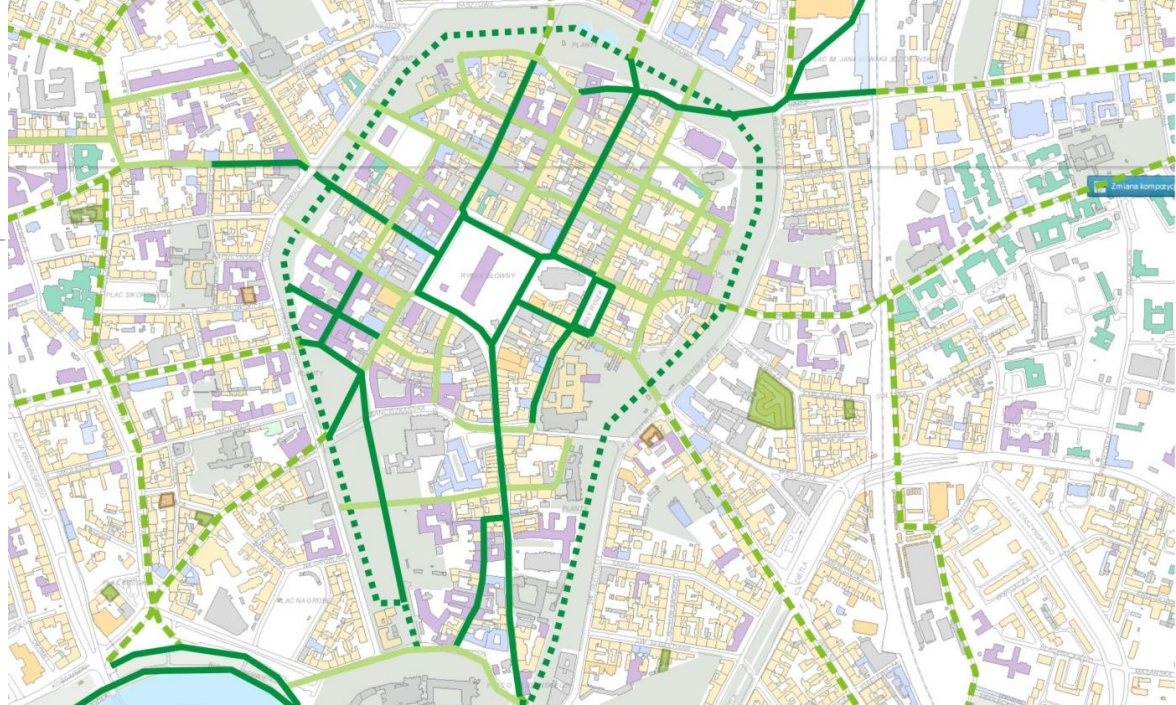


**~4%**





- ▶ One of the longest car free street network in the World
- ▶ Large access restriction area
- ▶ CiviTAS AWARD 2016 for the Best Transformation



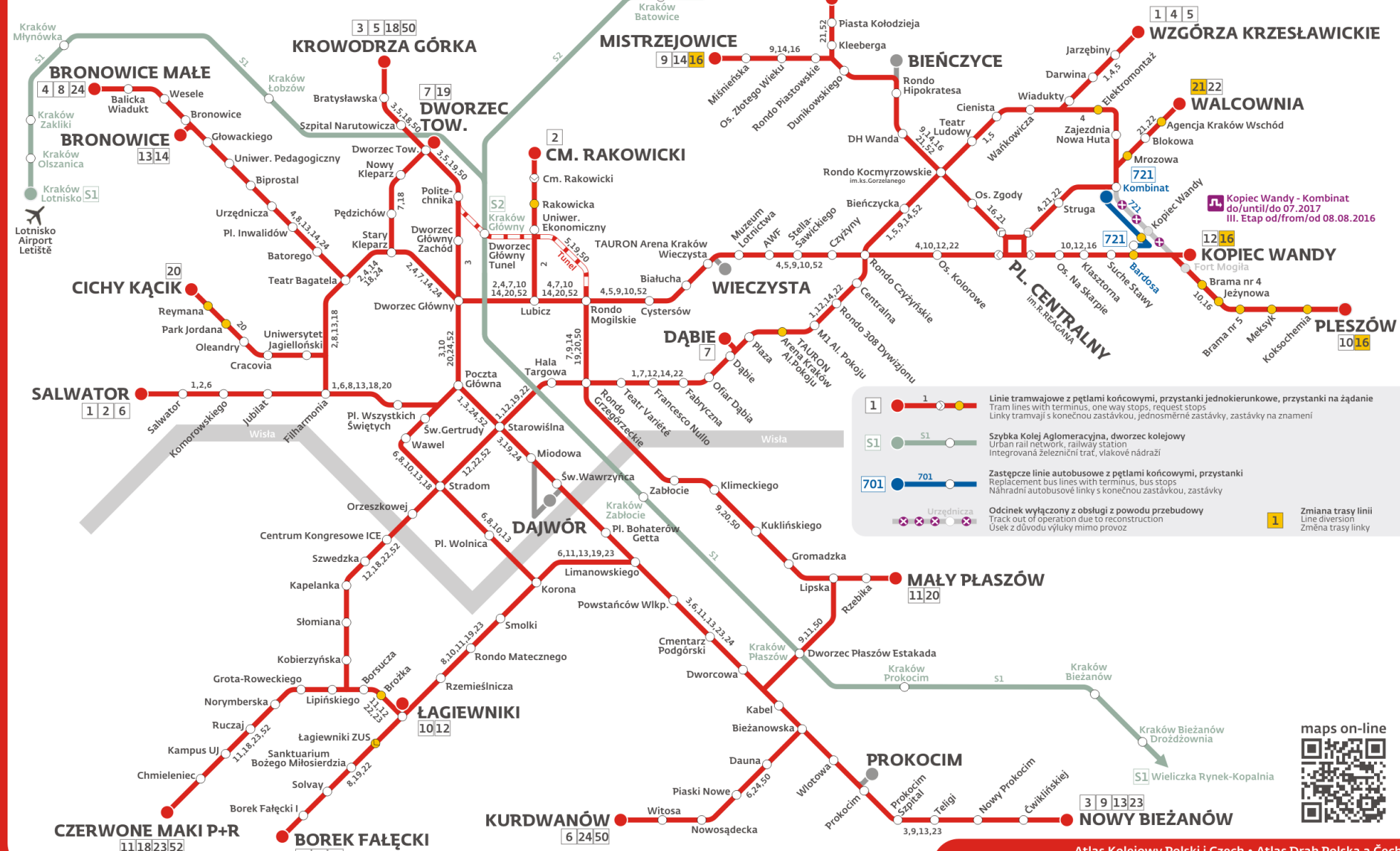
# Tram network

## Tramwaje / Trams / Tramvaje

PLAN ORIENTACYJNY / ORIENTATION PLAN / ORIENTAČNÍ PLÁN

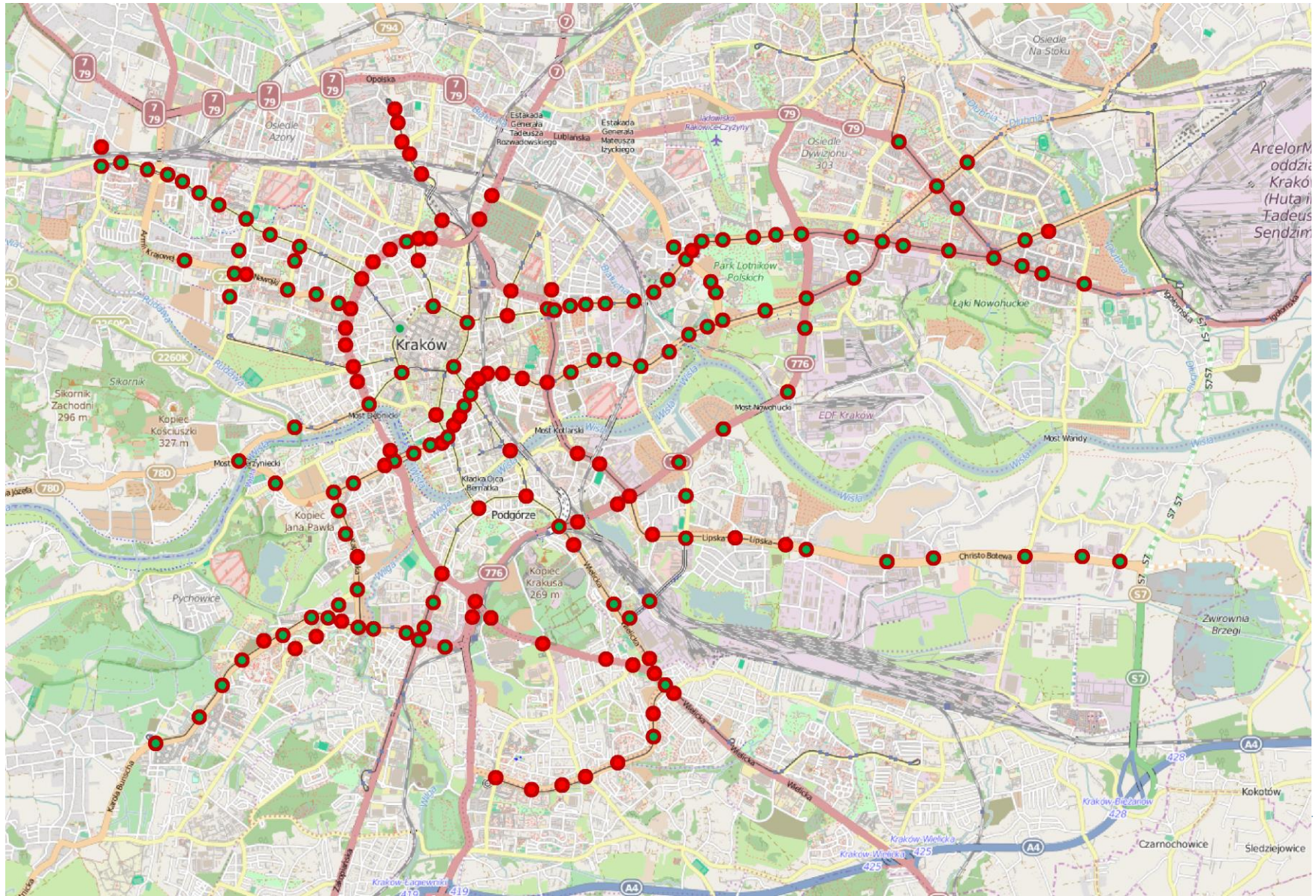
Ważny od / Valid as of / Platnost od **03.10.2016**

uwzględniono tymczasowe zmiany / includes temporary changes / výlukový stav





# ITS – Urban Traffic Control System





# ITS – Traffic Tram Supervision System









Dworzec Główny

Linia	Przystanek docelowy	Odjazd
50	Kurdwanów petla	1 min
		at się od rozpoczęcia 12:50

ITS – Dynamic Passenger Information



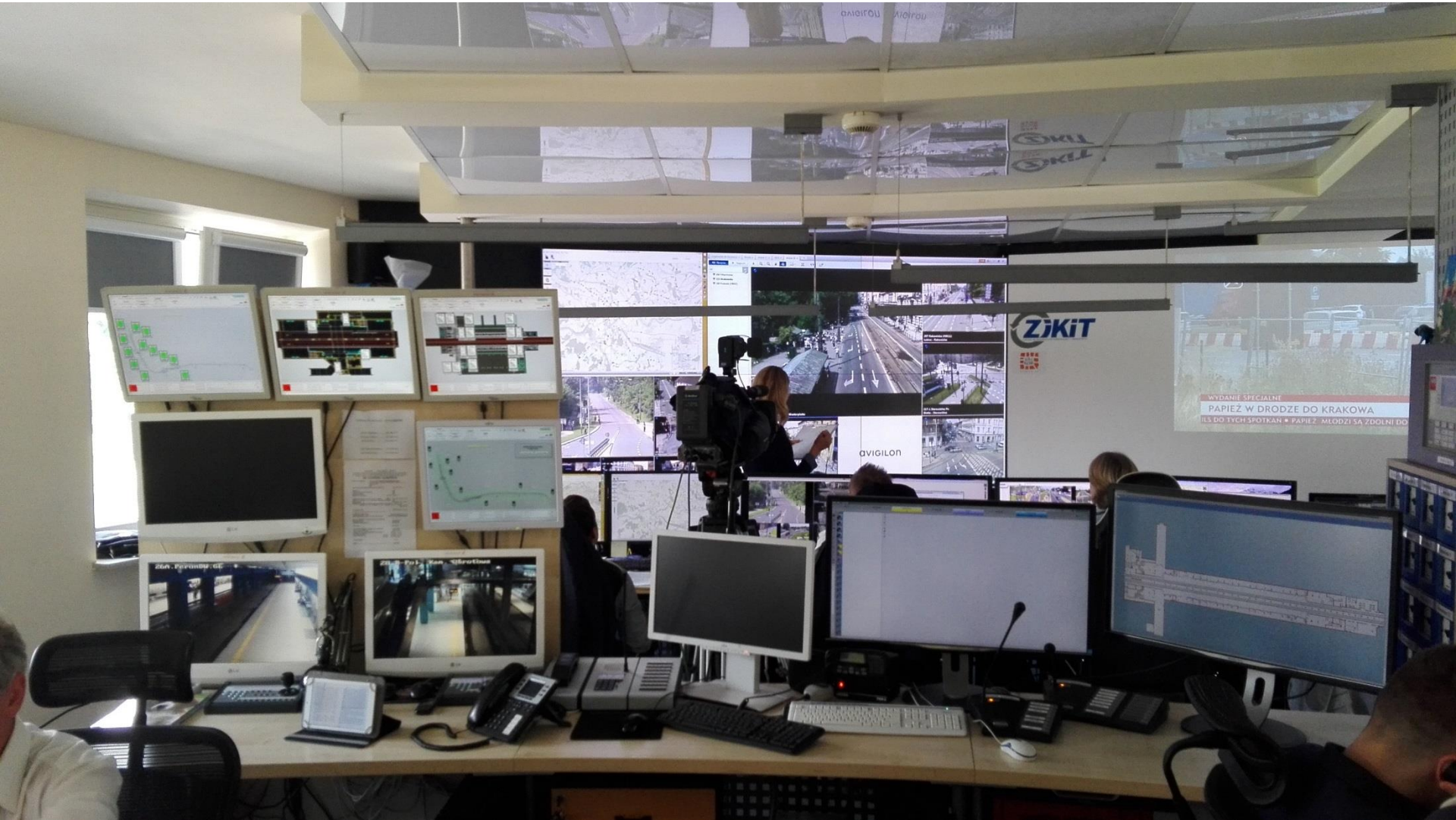
STREFA  
OGR. RUCHU

 22.9°C  
 32.0°C





# ITS Management Centre





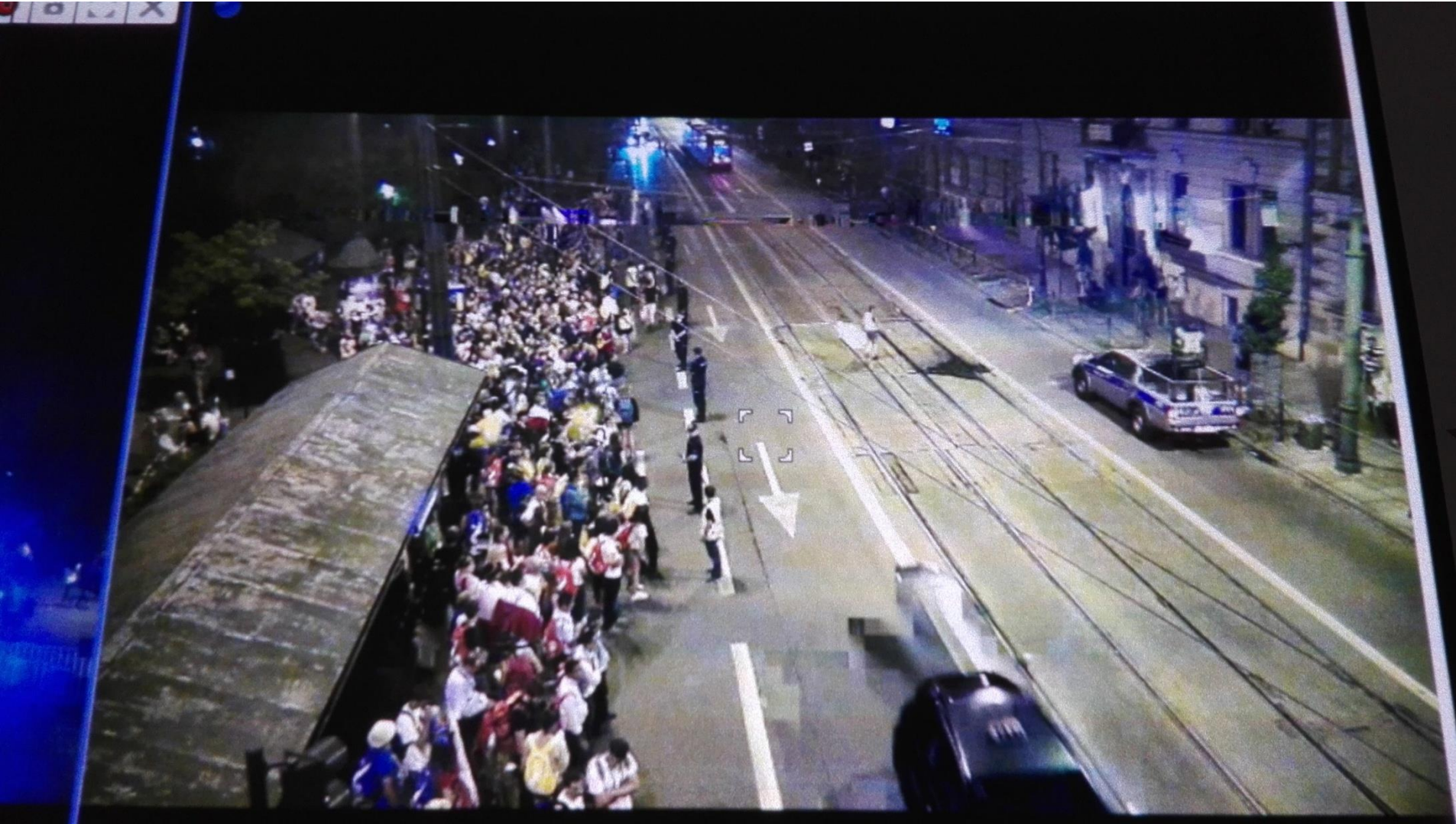
# World Youth Days – ITS as a tool



240 Podwale (HIK02)  
Piłsudskiego - Straszewskiego



# World Youth Days – on demand PT





# World Youth Days - emergency



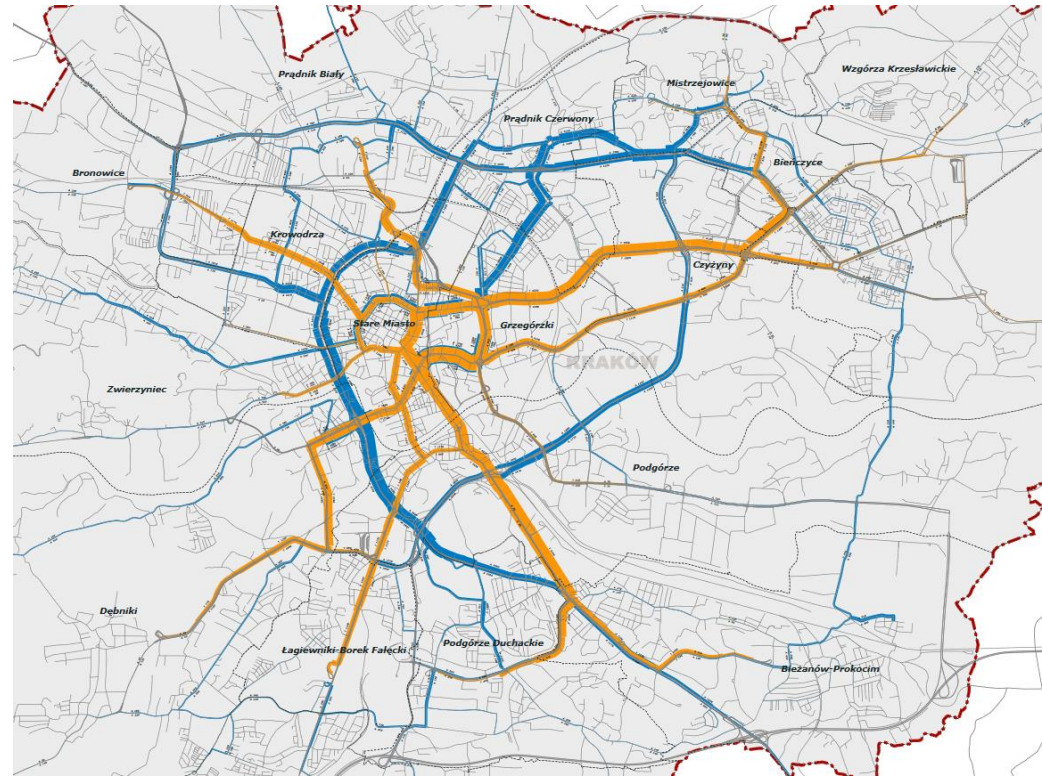
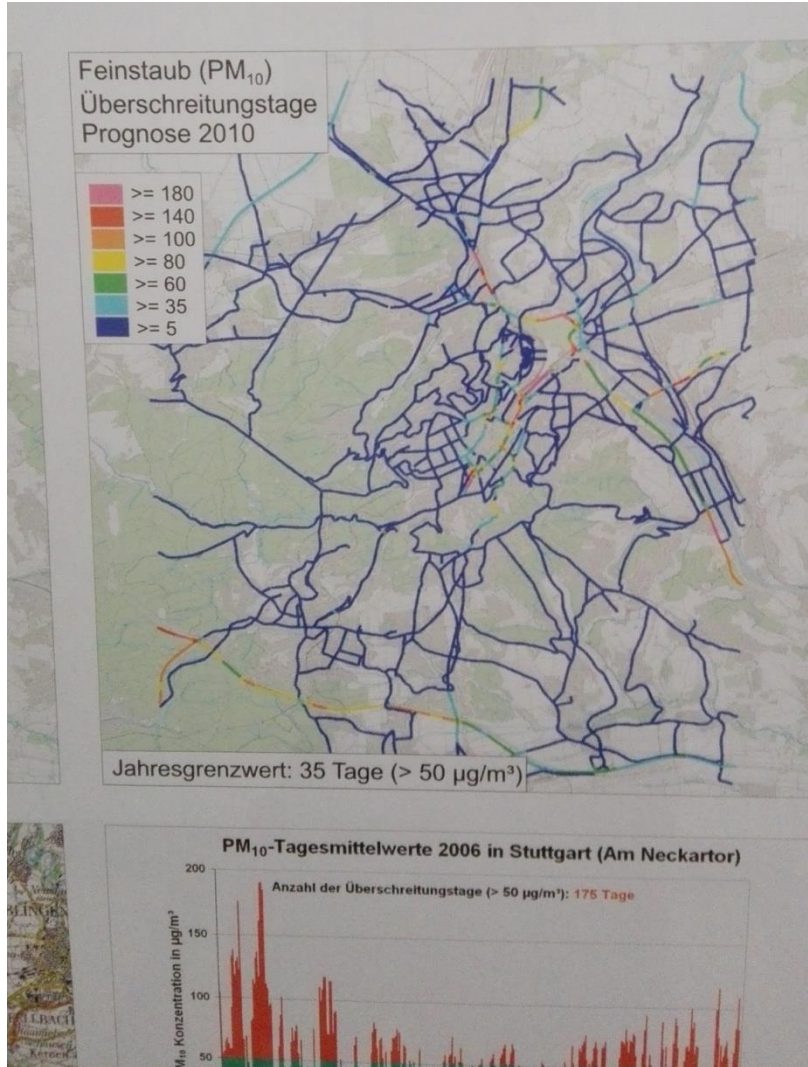


# WYD – 2,5 mln people management





# ITS – not possible without good data





# ITS dedicated for PT, Cycling and Walking

---





---

**Thank You**

